



 Mitsubishi Corporation Machinery, Inc.



Mitsubishi Corporation Machinery, Inc. is a professional trading company in the field of machinery and components that was established in 1982 as a wholly owned subsidiary of Mitsubishi Corporation's Machinery Group. The company started out with a staff of 17 people and a turnover of 3 billion yen.

Since our founding in 1982, we have developed as a trading company specializing in the construction of large-scale power plants, power transmission facilities, industrial infrastructure such as oil, gas, chemical and steel plants, and social infrastructure such as airports and transportation systems, as well as the import of defense-related systems and civilian helicopters.

We are taking on the challenge of developing and creating new businesses in addition to traditional business development, with the aim of becoming a solution provider leveraging the trust and the experience we have accumulated.



INFRASTRUCTURE PROJECT

Creating new infrastructure businesses to contribute to society through extensive industry experiences.



MCM BUSINESS FIELD



NEW BUSINESS DEVELOPMENT

As a Challenger of New Business Development, and to fulfill the needs of our clients, we shall contribute to realize sustainable society as Infrastructure Solution Provider.



AEROSPACE

We contribute to the national security and disaster response of Japan in the fields of defense-related systems and civilian helicopters.

INFRASTRUCTURE SOLUTION PROVIDER

INFRASTRUCTURE & INDUSTRIAL PROJECTS

BUSINESS FIELD



Creating new infrastructure businesses to contribute to society through extensive industry experiences

The infrastructure and industrial projects business sector contributes to infrastructure development and economic growth around the world through engineering, procurement, and construction (EPC) projects.

These include social infrastructure projects like airports, seaports, roads, and bridges which establish a basis for economic growth; industrial projects such as chemical plants, iron and steel plants, and non-ferrous metal plants that support a country's key industries; and supplying key equipment like compressors which can be considered the core of chemical plants. In the social infrastructure segment, we are engaged in high-quality infrastructure development in countries around the world together with strategic partners both in Japan and overseas. We are also helping to build significant infrastructure like airports, seaports, and water treatment plants by utilizing official development assistance (ODA) from Japan. In the chemical plant segment, we are involved in developing facilities such as LNG plants, which are vital to energy policy, and fertilizer plants to meet the growing global demand for food. We manage all phases including contract signing, contract execution, and ongoing after-sales services. In the iron and steel and non-ferrous metal plants segment, we are cooperating with strategic partners in Japan and overseas to contribute to the development of countries primarily in Asia and the Americas by working on the construction and commissioning of primary key structures, such as blast furnaces, electric furnaces, and rolling mills.

The infrastructure project business sector is diverse, but we are constantly leveraging our experience and knowledge to work toward creating new businesses that contribute to society.

PROJECTS



Photo Play / Shutterstock.com

Doha Metro, Qatar

This is the first railway project in Qatar that has been conducted as part of municipal development/improvement in Doha, the capital of Qatar, prompted by the 2022 FIFA World Cup. Qatar is one of the Gulf countries in the Middle East that has remarkably developed in recent years. The railway project is a fully automatic unmanned operation system with a total length of 76 km. We have been mainly in charge of supplying vehicles (330 in total) and have greatly contributed to the fulfillment of the contract.



New Ammonia/Urea project in Garabogaz, Turkmenistan

Turkmenistan has the fourth largest gas reserves in the world. We are currently undertaking an ammonia and urea project in Garabogaz on the Caspian Sea that utilizes these competitive gas resources alongside Japanese technology and finance. Urea from this plant boosts agricultural output within the country and helps in the acquisition of foreign currency through exports.



After-Sales Services Business for the Dahtan Gas Fired Combined Cycle Power Plant in Taiwan

As an EPC contractor, we constructed the Dahtan Gas Fired Combined Cycle Power Plant, which is an important large-scale power source in Taiwan. Since the commencement of operation in 2006, we have been providing after-sales services through a long-term maintenance contract aiming for stable operation and developing our relationship with the customer. Thus, we are able to grasp the customer's needs accurately in time, and as a result, recently we have been working on the gas turbine upgrade project of to realize the following: 1) rapid start-up in response to demand, 2) increased output (MW), 3) improved efficiency, 4) extension of the inspection interval to reduce operation and maintenance costs, and 5) NOx reduction.

NEW BUSINESS DEVELOPMENT

BUSINESS FIELD



**As a Challenger of New Businesses Development,
and to fulfil the needs of our clients,
we shall contribute to realize sustainable society
as Infrastructure Solution Provider.**

In the age of VUCA (Volatility, Uncertainty, Complexity, and Ambiguity), to meet the demands of the world market and the new era, our division was newly established in 2023 to find the solution to the challenges of our clients especially in the Operation & Maintenance field of infrastructure and plants industries.

Aspiring to be a professional solution provider that works closely with clients, we will continue to challenge, develop and create new businesses, using our competency cultivated by the keen sense of the job site, facilities and machineries, and the highly practical skillsets that were developed and proven through our 40-year history since Mitsubishi Corporation Machinery establishment.





Contributing to the national security and disaster response of Japan by providing various value-added services to our customers

The aerospace business sector deals with defense-related systems and civilian helicopters. As a representative of major U.S. aerospace and defense companies such as Lockheed Martin, Raytheon Technologies, Northrop Grumman, and Sikorsky, which is part of Lockheed Martin, we support the introduction and procurement of various equipment, systems, engines, and other components for aircraft, ships, and land/sea-based systems operated by the Japan Self-Defense Forces. In the civilian helicopter sector, we provide helicopters manufactured by Sikorsky to the Japan Coast Guard, local governments, and commercial enterprises.

Our mission is to collect information, and provide valuable services and solutions to meet the needs of the domestic and international customers. The aerospace business sector aims to make positive contributions to Japan's national security and disaster response through business involvement in these important fields.

PROJECTS

Avionics and Guidance Systems

We provide various avionics and guidance systems to Ground, Maritime, and Air Self-Defense Forces. We are the representative of U.S. manufacturers and support marketing activities in Japan. We also provide after-sales services such as contract implementation.

Shipboard Systems

We provide shipboard systems to the Maritime Self-Defense Force for their destroyers and submarines. We are the representative of North American manufacturers and support marketing activities in Japan. We also provide after-sales services such as contract implementation.

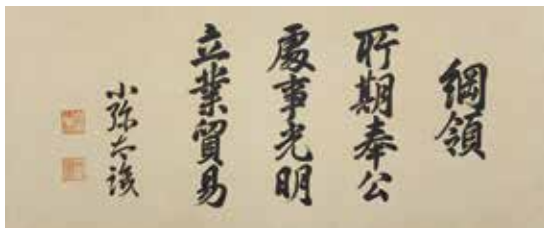
Helicopters

We provide helicopters to Ground, Maritime, and Air Self Defense Forces, as well as mid-large size commercial helicopters to government agencies and commercial enterprises. We are the representative of a U.S. manufacturer and support marketing activities in Japan. We also provide after-sales services such as contract implementation.

COMPANY PROFILE

Name	Mitsubishi Corporation Machinery, Inc.
Established	September 16, 1982
Capital	300 million yen (wholly owned by Mitsubishi Corporation)
President & CEO	JUNICHIRO NAKATSUKA
No. of employees	363
Business activities	Construction and providing after-sales services for large-scale power plants, power transmission facilities, industrial infrastructure such as oil, gas, chemical and steel plants, social infrastructure such as airports and transportation systems, and the import of defense-related systems and civilian helicopters.
Address	4F Marunouchi 2-Chome Building, 5-1, Marunouchi 2-Chome, Chiyoda-ku, Tokyo 100-0005
Contact	TEL : 03-6865-7800 (reception) FAX : 03-6865-7801
Nagoya Branch	Dai Nagoya Building 17th FL, 28-12, Meieki, 3-Chome, Nakamura-ku, Nagoya 450-8680

CORPORATE PHILOSOPHY



The Three Corporate Principles

As a member of the Mitsubishi Corporation group, we seek to conduct our business in a fair and steadfast manner in accordance with our Three Corporate Principles.

Corporate Responsibility to Society “Shoki Hoko”

Strive to enrich society, both materially and spiritually, while contributing towards the preservation of the global environment.

Integrity and Fairness “Shoji Komei”

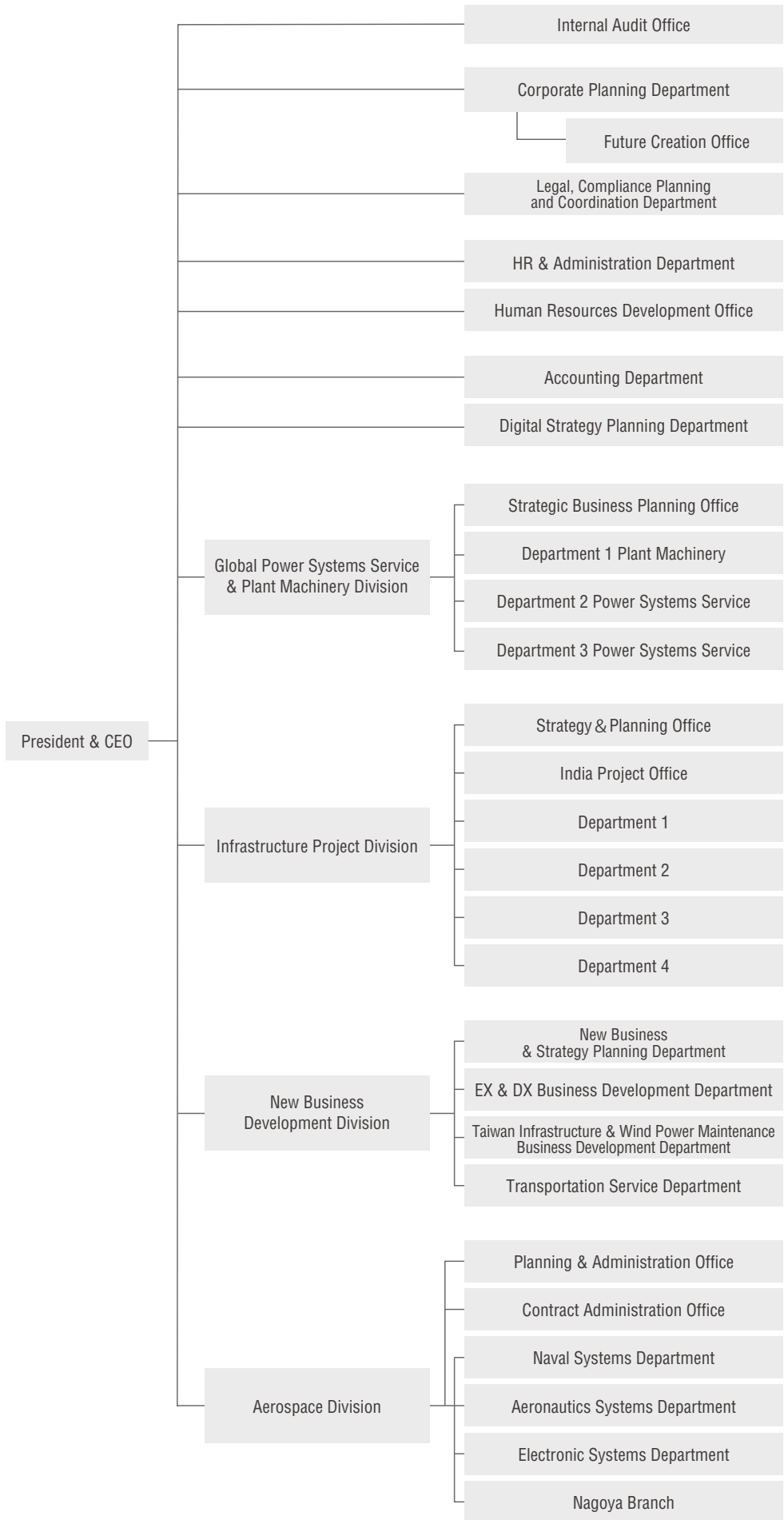
Maintain principles of transparency and openness, conducting business with integrity and fairness.

Global Understanding Through Business “Ritsugyo Boeki”

Expand business, based on an all-encompassing global perspective.

The modern-day interpretation of the Three Corporate Principles, as agreed on at the Mitsubishi Kinyokai meeting of the companies that constitute the so-called Mitsubishi group in January 2001.

ORGANIZATION CHART





 **Mitsubishi Corporation Machinery, Inc.**

4F Marunouchi 2-Chome Building, 5-1, Marunouchi 2-Chome, Chiyoda-ku, Tokyo 100-0005

TEL : 03-6865-7800 (reception) FAX : 03-6865-7801

<http://www.mcmachinery.co.jp/>